

ITEM 37. PARKING – TIMED PARKING – GADIGAL AVENUE WATERLOO

TRIM RECORD NO: 2017/305492

RECOMMENDATION

It is recommended that the Committee endorse the following kerbside changes in Gadigal Avenue, Waterloo (i.e. a new road):

- (A) Western side, between the points 12 metres and 18.5 metres (one car space) north of Tung Hop Street as, “2P 8am-8pm”;
- (B) Western side, between the points 46.2 metres and 52.7 metres (one car space) north of Tung Hop Street, as “2P 8am-8pm”;
- (C) Western side, between the points 58.2 metres and 64.7 metres (one car space) north of Tung Hop Street as, “2P 8am-8pm”;
- (D) Eastern side, between the points 20 metres and 38.3 metres (three car spaces) north of Tung Hop Street, as “2P 8am-8pm”;
- (E) Northern side, at a point 69 metres, north of Tung Hop Street, as “No Stopping”; and
- (F) A yellow “No Stopping” line on the western and eastern sides along all kerb space that is not indented.

VOTING MEMBERS FOR THIS ITEM

<i>Voting Members</i>	<i>Support</i>	<i>Object</i>
City of Sydney		
Roads and Maritime Services		
NSW Police – Redfern LAC		
Representative for the Member for Heffron		

DECISION

BACKGROUND

The Development Consent for 13-17 Lachlan Street, Waterloo (D/2015/782) requires the Applicant to deliver a new road known as “Gadigal Avenue”, between Murray Street and Tung Hop Street. At the completion of the works, the new road will be dedicated to the City.

In addition, Condition 17 for 13-17 Lachlan Street, Waterloo requires the Applicant to submit a signage plan for kerbside parking and line marking arrangements that is to be referred to the Local Pedestrian, Cycling and Traffic Calming Committee, as part of the dedication of “Gadigal Avenue” as a public road.

COMMENTS

The Lachlan Precinct, bounded by Bourke, Lachlan and South Dowling Streets and O’Dea Avenue, forms part of the Green Square urban renewal area and will include a new two-way north-south road, to be known as “Gadigal Avenue” which will connect O’Dea Avenue and Lachlan Street.

The City has approved the redevelopment of 13-17 Lachlan Street, Waterloo which includes the provision of part of Gadigal Avenue, between Murray Street and Tong Hop Street. This section of Gadigal Avenue will provide vehicular access to the development site, until the remainder of Gadigal Avenue is delivered as part of adjacent development sites.

The new road is a two-way street, 12.8 metres wide and all parking spaces are provided in indented bays. Gadigal Avenue will also have a landscaped median island (6.9 metres wide) throughout the length of the street.

Parking within the indented bays will be signposted with timed parking restrictions i.e. “2P 8am-8pm” which are in line with the City’s Neighbourhood Parking Policy and will be the same as the existing restrictions in nearby completed streets. These restrictions will provide parking turnover and availability of short term parking for visitors to the area.

A two-hour parking limit is preferred for streets in the inner residential areas as it better balances the long-stay parking needs of all households to use parking for visitors, family, carers and tradespeople.

The kerb space outside of the indented parking bays will have yellow line marking to indicate a “No Stopping” restriction.

Gadigal Avenue will form a temporary dead-end, north of Murray Street, until access to Lachlan Street is completed as part of adjacent development sites. Access to this section of Gadigal Avenue will be temporarily available from Murray Street only with the northern side of the street, at the dead-end, signposted as “No Stopping” to provide a temporary turning area. The temporary turning area will allow vehicles to turn around in Gadigal Avenue and travel south back to Murray Street.

CONSULTATION

Consultation with affected stakeholders was undertaken as part of the Development Application process for 13-17 Lachlan Street, Waterloo.

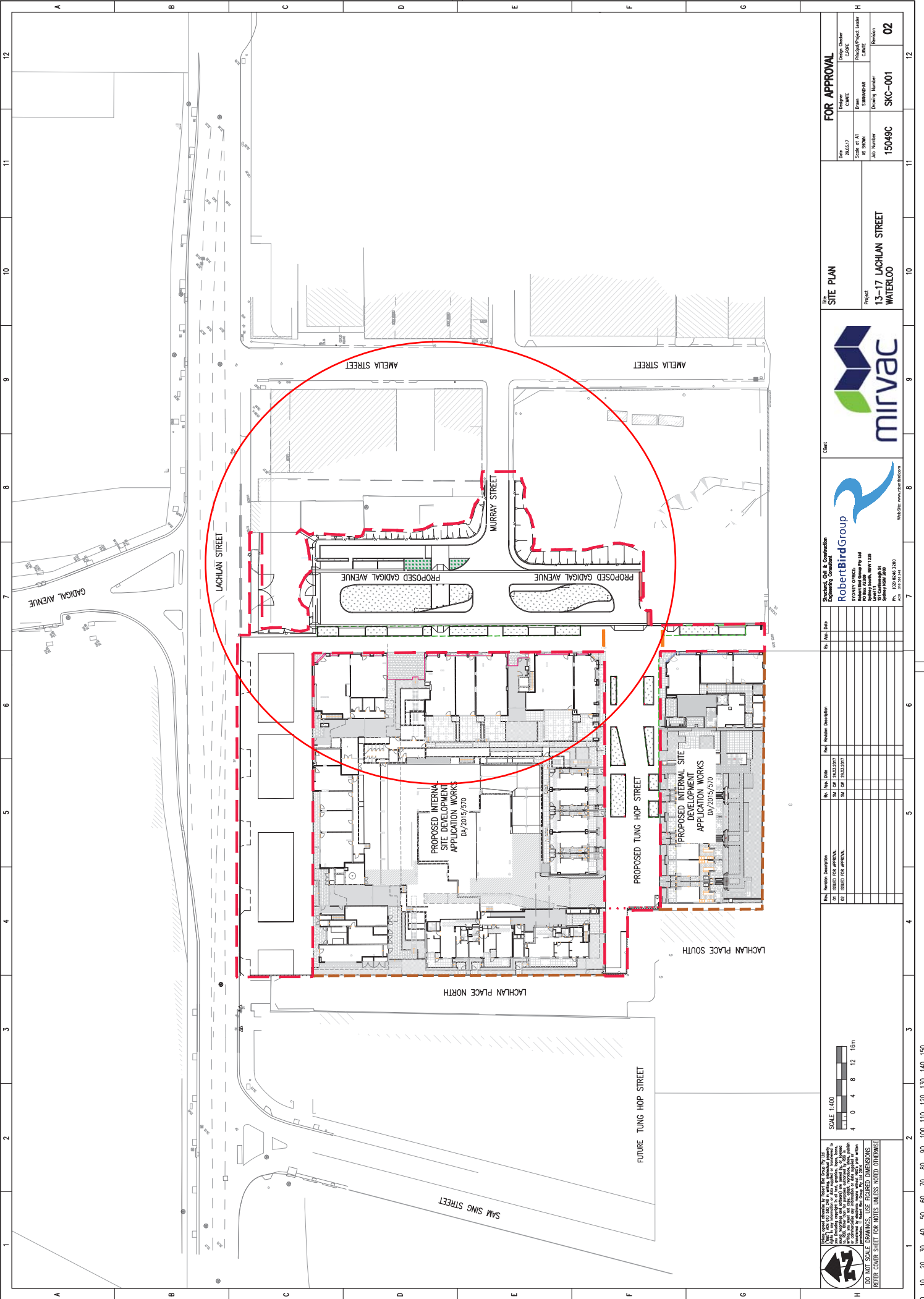
FINANCIAL

All costs associated with the works will be borne by the Applicant.

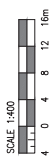
ATTACHMENTS

Parking – Timed Parking – Gadigal Avenue Waterloo

James Nguyen, Engineering Traffic Officer



DO NOT SCALE DIMENSIONS. USE DIMENSIONS NOTED OTHERWISE.
 REFER COVER SHEET FOR NOTES UNLESS NOTED OTHERWISE.



SCALE 1:400

THIS DRAWING IS THE PROPERTY OF ROBERT BIRD GROUP. IT IS TO BE USED ONLY FOR THE PROJECT AND SITE SPECIFICALLY IDENTIFIED HEREIN. ANY REUSE OR MODIFICATION OF THIS DRAWING WITHOUT THE WRITTEN PERMISSION OF ROBERT BIRD GROUP IS STRICTLY PROHIBITED. THE CLIENT ACCEPTS RESPONSIBILITY FOR THE ACCURACY OF THE INFORMATION PROVIDED TO ROBERT BIRD GROUP AND FOR THE RESULTS OF ANY INVESTIGATION OR ANALYSIS CONDUCTED BY ROBERT BIRD GROUP. ROBERT BIRD GROUP DOES NOT WARRANT THE ACCURACY OF THE INFORMATION PROVIDED TO ROBERT BIRD GROUP OR THE RESULTS OF ANY INVESTIGATION OR ANALYSIS CONDUCTED BY ROBERT BIRD GROUP. ROBERT BIRD GROUP IS NOT RESPONSIBLE FOR ANY DAMAGE, LOSS, OR LIABILITY OF ANY KIND, INCLUDING CONSEQUENTIAL DAMAGES, ARISING FROM THE USE OF THIS DRAWING. THE CLIENT ACCEPTS RESPONSIBILITY FOR THE ACCURACY OF THE INFORMATION PROVIDED TO ROBERT BIRD GROUP AND FOR THE RESULTS OF ANY INVESTIGATION OR ANALYSIS CONDUCTED BY ROBERT BIRD GROUP. ROBERT BIRD GROUP DOES NOT WARRANT THE ACCURACY OF THE INFORMATION PROVIDED TO ROBERT BIRD GROUP OR THE RESULTS OF ANY INVESTIGATION OR ANALYSIS CONDUCTED BY ROBERT BIRD GROUP. ROBERT BIRD GROUP IS NOT RESPONSIBLE FOR ANY DAMAGE, LOSS, OR LIABILITY OF ANY KIND, INCLUDING CONSEQUENTIAL DAMAGES, ARISING FROM THE USE OF THIS DRAWING.

Rev	Revision Description	By	Hqs	Date
01	ISSUED FOR APPROVAL	SM	CM	23/02/2017
02	ISSUED FOR APPROVAL	SM	CM	23/02/2017

Supervising Civil Engineer
Robert Bird Group
 10/100 GADIGAL AVENUE
 WATERLOO VIC 3618
 T: (03) 9448 3300
 F: (03) 9448 3308
 www.rbg.com.au



Client
mirvac
 13-17 LACHLAN STREET
 WATERLOO

FOR APPROVAL

Task	23/03/17	Issue	Issue Order
Scale	Scale as AT	Drawn	Project/Project Leader
Job Number	15049C	Drawing Number	02
Job Number	15049C	Drawing Number	02

13-17 LACHLAN STREET
 WATERLOO



PAVEMENT MARKING LEGEND

LINE TYPE	USE	DIMENSIONS	COLOUR
TB1	GIVE WAY LINE	60mm gap, 60mm width, 100mm offset	WHITE
P2	KERBSIDE LINEMARKING FOR NO STOPPING RESTRICTION	100mm width	YELLOW
E1	EDGE LINE	120mm width	WHITE
S5	SEPARATION LINE (BICYCLE LANE)	80mm width	WHITE

